

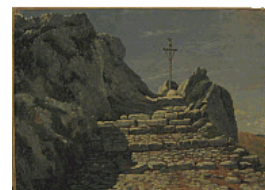
1.20.2021 American Art Deaccessioned

Object Summary

1. Albert Bierstadt, American | German, 1830 - 1902
Painting
Landing of Columbus, ca. 1893
Oil on canvas
Image: 72 x 120 in. (182.9 x 304.8 cm)
Gift of Dr. J. Ackerman Coles, 1920
20.1167



2. Albert Bierstadt, American | German, 1830 - 1902
Painting
Landscape, mid-19th century - early 20th century
Oil on paper mounted to canvas
Overall: 11 1/16 x 15 1/4 in. (28.1 x 38.7 cm)
Paper: 10 5/8 x 14 15/16 in. (27 x 37.9 cm)
Gift of Mr. and Mrs. Orrin Wickersham June, 1960
60.595



3. Alexander Calder, American, 1898 - 1976
Sculpture
Bull, 20th century
Painted terracotta with glass jewels
Overall: 24 x 12 1/2 x 11 in. (61 x 31.8 x 27.9 cm)
Gift of Carl D. Lobell, 2002
2002.27.1



4. Frederic Edwin Church, American, 1826 - 1900
Painting
Landscape
Oil on canvas
Framed: 23 1/4 x 35 1/4 in. (59.1 x 89.5 cm)
Image: 18 x 30 in. (45.7 x 76.2 cm)
Gift of Dr. J. Ackerman Coles, 1924
24.2496



5. Thomas Cole, American, 1801 - 1848
Painting
Landscape
Oil on canvas
Framed: 45 7/8 x 38 7/8 in. (116.5 x 98.7 cm)
Image: 31 x 24 in. (78.7 x 61 cm)
Bequest of Dr. J. Ackerman Coles, 1926
26.1166



Object Summary

6. Thomas Cole, American, 1801 - 1848

Painting

The Arch of Nero, 1846

Oil on canvas

Framed: 74 1/2 x 61 1/2 in. (189.2 x 156.2 cm)

Image: 60 1/4 x 48 1/4 in. (153 x 122.6 cm)

Purchase 1957 Sophronia Anderson Bequest Fund

57.24



7. Burgoyne Diller, American, 1906 - 1965

Painting

Number 47, 1962

Oil on canvas

Framed: 51 1/4 x 51 1/4 in. (130.2 x 130.2 cm)

Image: 50 x 50 in. (127 x 127 cm)

Purchase 1970 Museum Purchase Fund; Purchase 1970 Newark Museum Purchase Fund

70.67



8. Thomas Eakins, American, 1844 - 1916

Painting

The Man in the Red Necktie, ca. 1890

Oil on canvas

Framed: 55 3/4 x 41 3/4 in. (141.6 x 106 cm)

Image: 50 x 36 in. (127 x 91.4 cm)

Purchase 1935 Wallace M. Scudder Bequest Fund

35.78



9. Marsden Hartley, American, 1877 - 1943

Painting

Shell, 1929

Oil on Canvas

Framed: 19 1/4 x 22 1/8 in. (48.9 x 56.2 cm)

Image: 15 1/4 x 18 1/2 in. (38.7 x 47 cm)

Bequest of Miss Cora Louise Hartshorn, 1958

58.177



10. Childe Hassam, American, 1859 - 1935

Painting

Piazza di Spagna, Rome, 1897

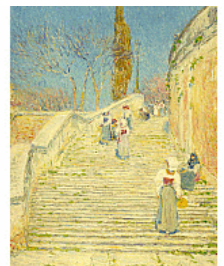
Oil on canvas

Framed: 41 x 35 3/8 in. (104.1 x 89.9 cm)

Image: 29 x 23 1/4 in. (73.7 x 59.1 cm)

Gift of the Misses Lindsley, 1926

26.272



Object Summary

11. Childe Hassam, American, 1859 - 1935

Painting

Woman Cutting Roses in a Garden, ca. 1889

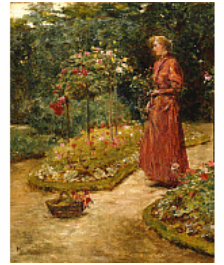
Oil on wood panel

Framed: 25 3/4 x 21 3/4 in. (65.4 x 55.2 cm)

Image: 18 x 14 1/2 in. (45.7 x 36.8 cm)

Bequest of Diana Bonnor Lewis, 1988

88.7



12. Thomas Moran, American, 1837 - 1926

Painting

Sunset / Santa Maria and the Ducal Palace, 1902

Oil on canvas

Framed: 33 3/8 x 43 1/2 in. (84.8 x 110.5 cm)

Image: 20 1/4 x 30 in. (51.4 x 76.2 cm)

Bequest of Dr. J. Ackerman Coles, 1926

26.1313



13. Georgia O'Keeffe, American, 1887 - 1986

Painting

Green Oak Leaves, 1923

Oil on canvas mounted on board

Framed: 12 3/4 x 9 3/4 in. (32.4 x 24.8 cm)

Image: 12 x 9 in. (30.5 x 22.9 cm)

Bequest of Cora Louise Hartshorn, 1958

58.168



14. Frederic Remington, American, 1861 - 1909

Roman Bronze Works

Sculpture

Trooper of the Plains, 1909

Bronze

Overall: 26 1/4 x 30 x 9 3/4 in. (66.7 x 76.2 x 24.8 cm)

Gift of Mr. and Mrs. William V. Griffin, 1952

52.167



15. James Rosati, American, 1912 - 1988

Sculpture

Pennine III, 1966

Stainless steel

Overall: 64 7/8 x 117 x 53 1/4 in. (164.8 x 297.2 x 135.3 cm)

Purchase 1969 with funds from the National Council on the Arts and Trustee contributions

69.25



Object Summary

16. Charles Sheeler, American, 1883 - 1965

Painting

Farm Buildings, Connecticut, 1941

Tempera on cardboard

Framed: 18 x 23 3/4 in. (45.7 x 60.3 cm)

Paper width: 19 1/8 in. (48.6 cm)

Image: 12 x 18 in. (30.5 x 45.7 cm)

Paper height: 13 1/4 in. (33.7 cm)

Purchase 1944 Wallace M. Scudder Bequest Fund

44.170



17. David Smith, American, 1906 - 1965

Sculpture

Untitled, 1964

Stainless steel

Overall: 117 1/2 x 62 1/2 x 16 3/4 in. (298.5 x 158.8 x 42.5 cm)

Purchase 1967 Charles Engelhard Foundation Fund

67.157



18. Richard Peter Stankiewicz, American, 1922 - 1983

Sculpture

Australia No. II, 1969

Cor-Ten Steel

Overall: 78 x 56 1/4 x 56 1/4 in. (198.1 x 142.9 x 142.9 cm)

Purchase 1974 with a grant from the National Endowment for the Arts and funds from the Charles W. Engelhard Foundation

74.55



19. Joseph Stella, American, 1877 - 1946

Painting

The Creche (The Holy Manger), ca. 1929-1933

Oil on canvas

Framed: 68 1/2 x 84 1/2 in. (174 x 214.6 cm)

Image: 60 1/2 x 77 1/4 in. (153.7 x 196.2 cm)

Purchase 1940 Wallace M. Scudder Bequest Fund

40.242



Page 1 of 4